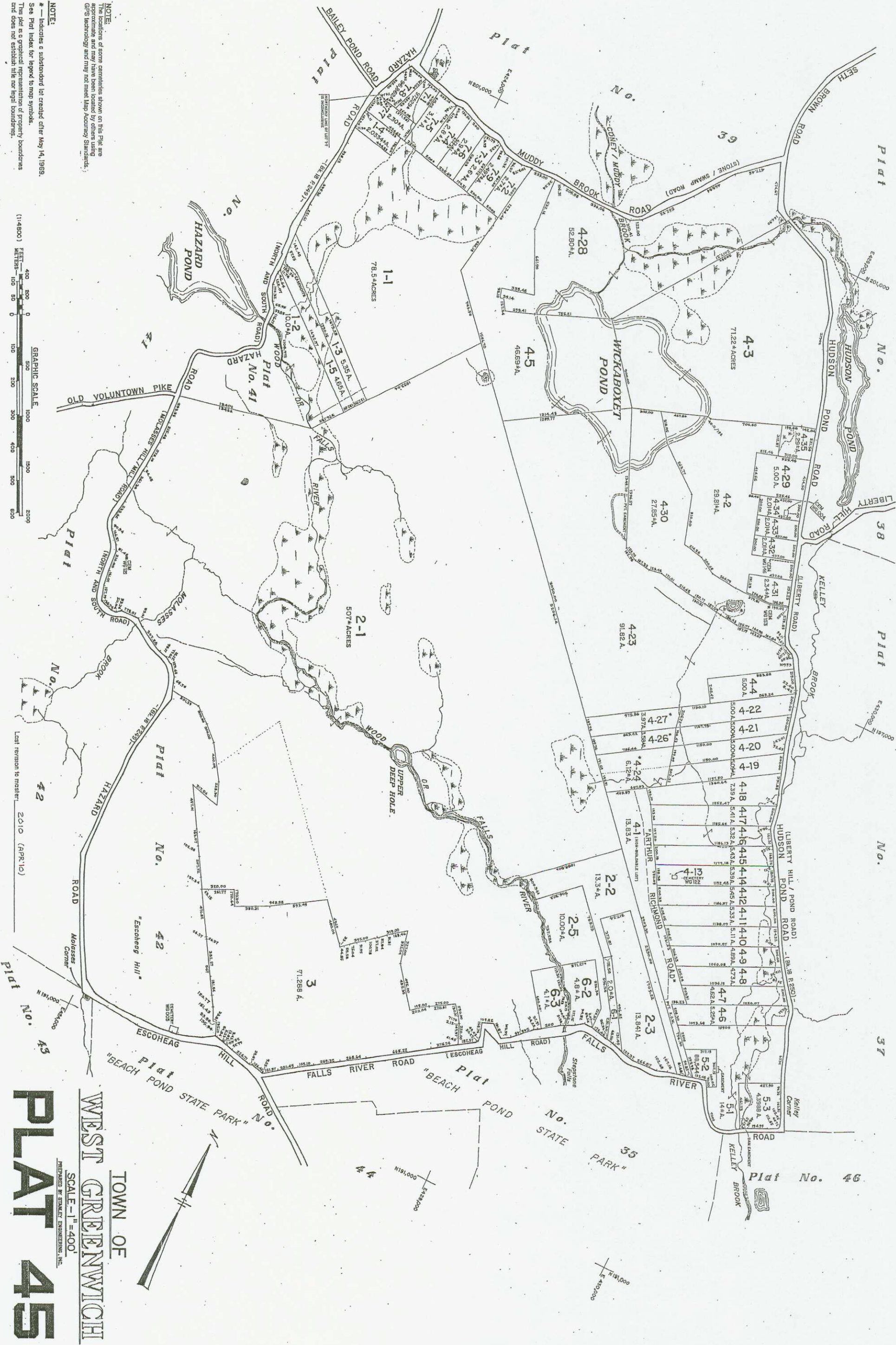


NOTE:
The locations of some corners shown on this Plat are approximate and may have been located by others using G.P.S. technology and may not meet Map Accuracy Standards.

NOTE:
— indicates a subdivision lot created after May 14, 1958.
See Plat Index for legend to map symbols.
This Plat is a graphical representation of property boundaries and does not establish title nor legal boundaries.



Last revision to master: 2010 (APR. 10)



TOWN OF
WEST GREENWICH
 SCALE - 1" = 400'
PLAT 45

