

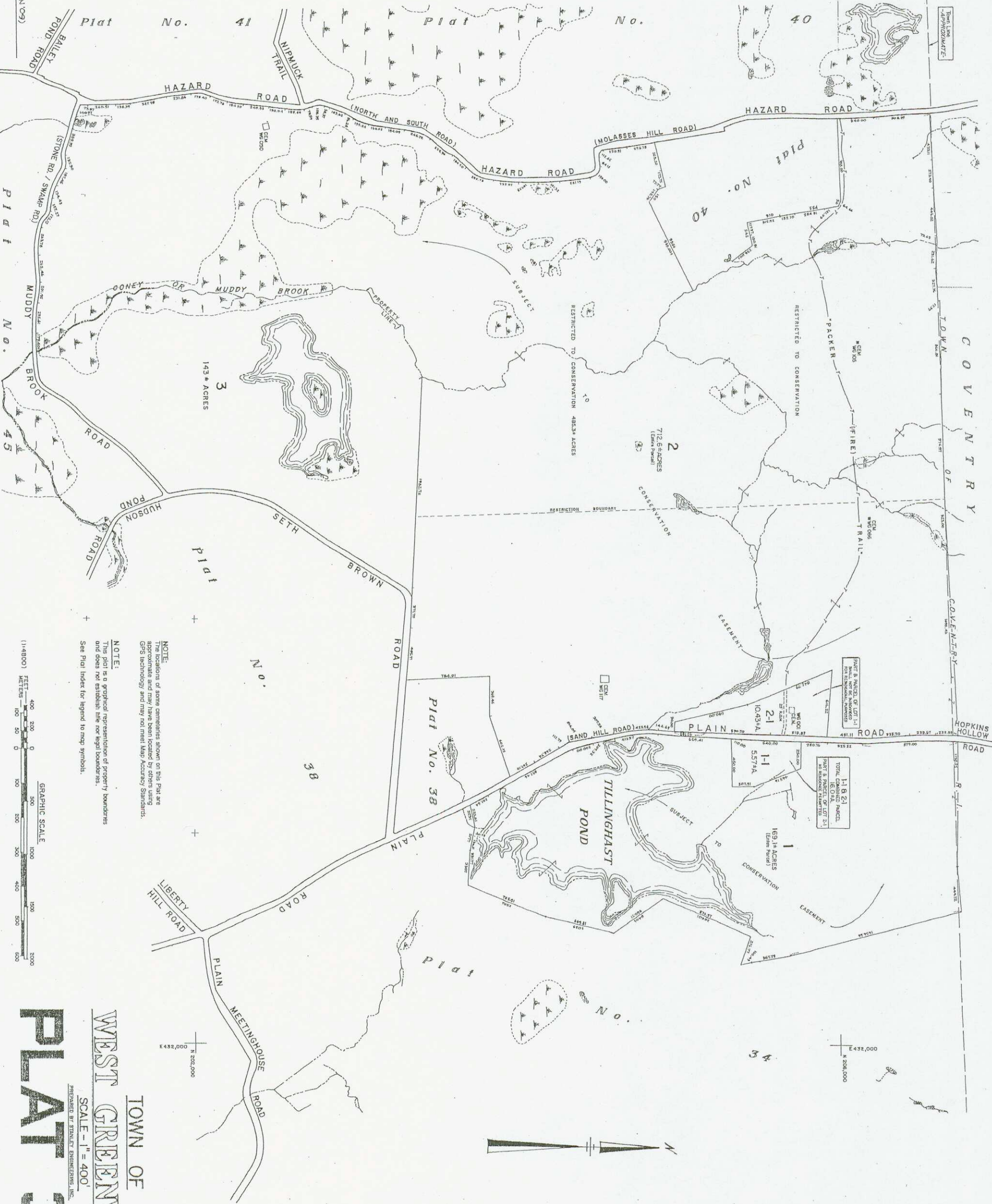
Last revision to master: 2008 (JAN-09)

N 202,000
E 422,000

N 200,000
E 422,000

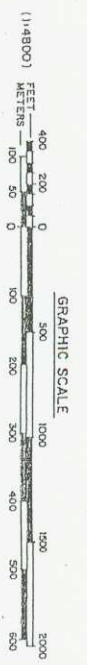
N 202,000
E 432,000

N 200,000
E 432,000



NOTE:
The locations of some covenants shown on this Plat are approximate and may have been located by others using GPS technology and may not meet Map Accuracy Standards.

NOTE:
This plat is a graphical representation of property boundaries and does not establish title nor legal boundaries.
See Plat Index for legend to map symbols.



TOWN OF
WEST GREENWICH
SCALE - 1" = 400'
PLAT 39

PREPARED BY STANLEY ENGINEERING, INC.