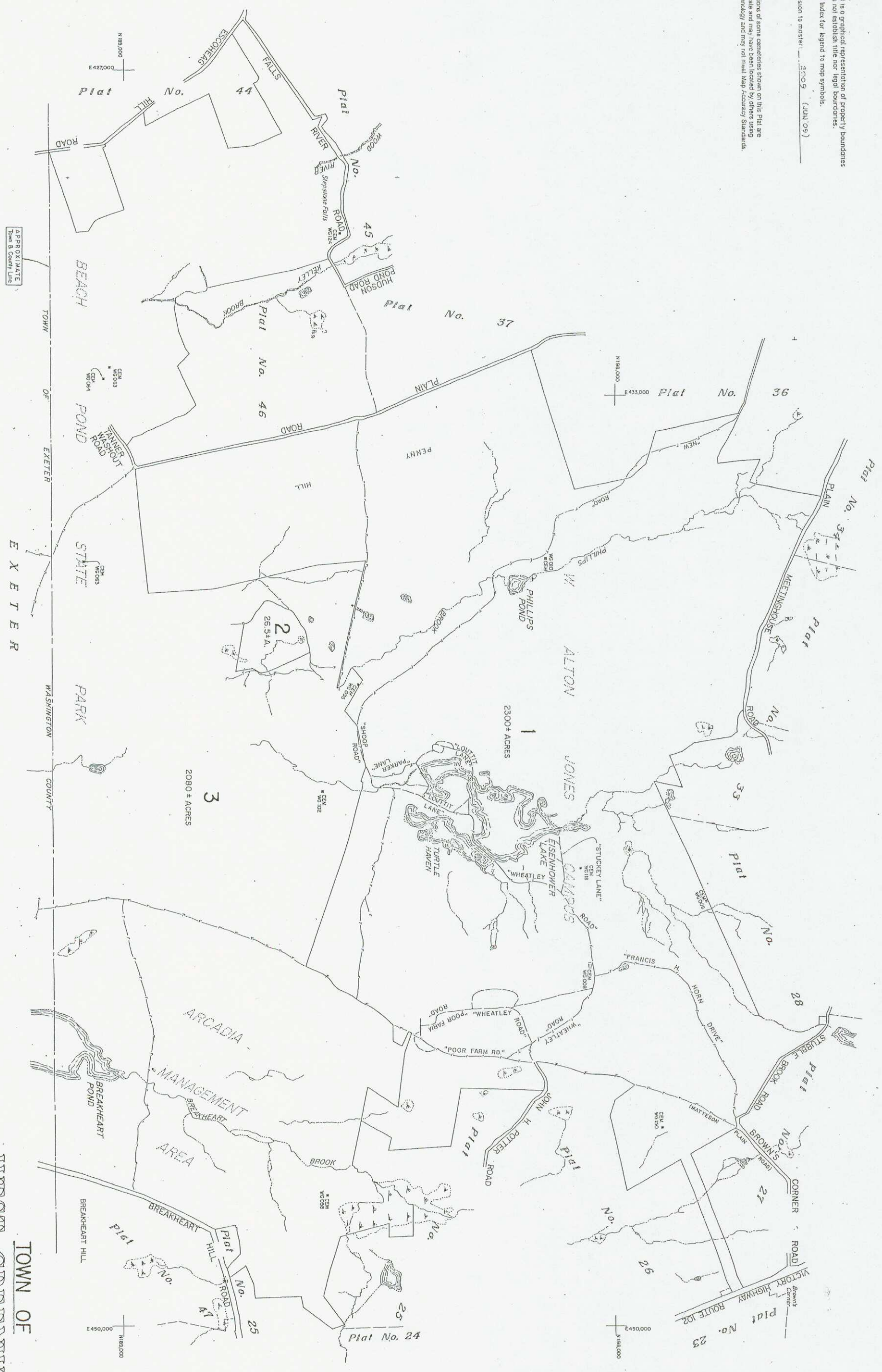


NOTE:  
 This plat is a graphical representation of property boundaries and does not establish title nor legal boundaries. See Plat Index for legend to map symbols.  
 Last revision to master: 3009 (JUN 09)

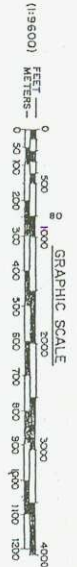


TOWN OF  
**WEST GREENWICH**

**PLAT 35**

SCALE - 1" = 800'

PREPARED BY STANLEY ENGINEERING, INC.



APPROXIMATE  
 TOWN & COUNTY LINES

TOWN OF EXETER  
 WASHINGTON COUNTY