

TOWN LINE 2204-2205  
Based on projected boundaries  
from Map No. 297 of 1971

APPROXIMATE  
Town Line (2007-08)  
Easements depicted by  
County from the 7th of 79  
and subsequent deeds

APPROXIMATE Town Line  
Based primarily on 1955 Maps

APPROXIMATE Town Line as shown  
on State Map No. 1948 and  
County Tax Maps

APPROXIMATE TOWN LINE BY  
RESIDENT & ROBERT S. SUTS  
OF 1971

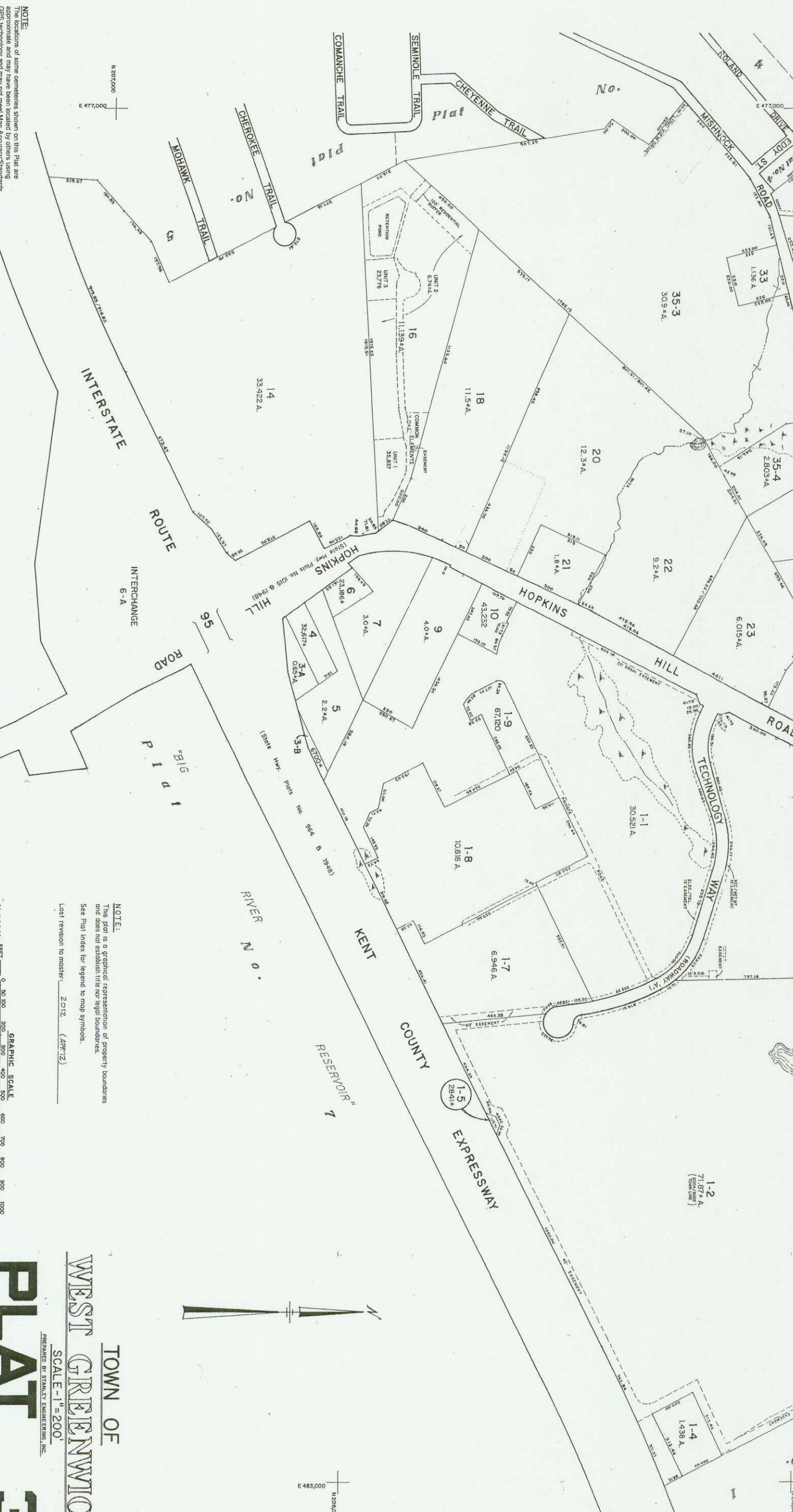
TOWN LINE 12004-S-3011/HB3591  
Plan No. 2-197  
Deed Book 298 Pg. 266 & 269

C O V E N I E N T Y

CENTRE OF NEW ENGLAND BLVD

71-27 A  
(TOWN LINE)

1-4  
1,438 A



NOTE:  
The locations of some cemeteries shown on this plat are  
approximate and may have been located by others using  
GPS technology and may not meet Map Accuracy Standards.

NOTE:  
This plat is a graphical representation of property boundaries  
and does not establish title nor legal boundaries.  
See Plat Index for legend to map symbols.  
Last revision to master: 2/12 (APR/12)

TOWN OF  
WEST GREENWICH  
SCALE - 1" = 200'  
PREPARED BY STANLEY ENGINEERING, INC.  
**PLAT 3**

GRAPHIC SCALE  
(1:2400) FEET METERS

N 287,000  
E 477,000

N 288,000  
E 483,000