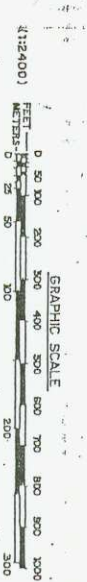
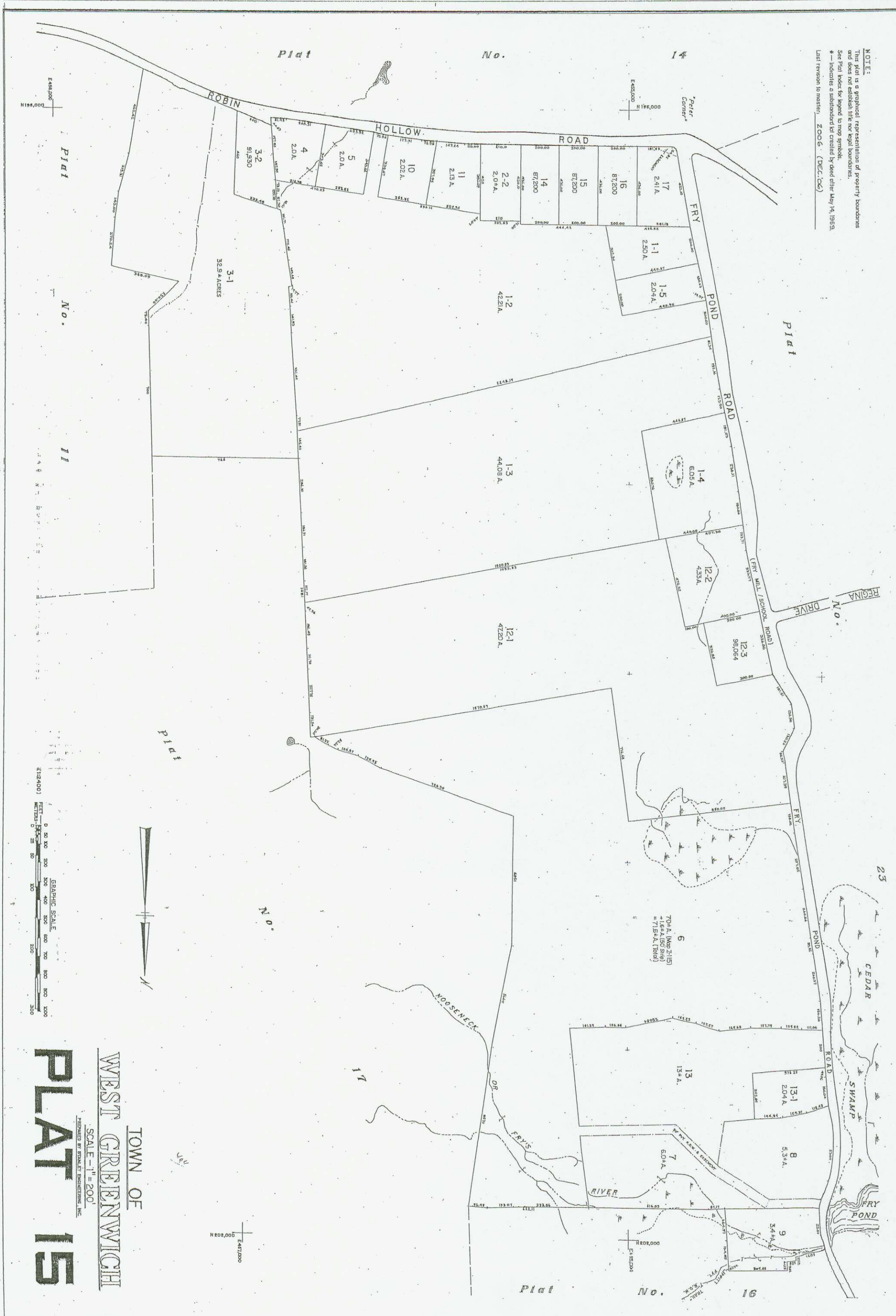


NOTE:
 This plat is a graphical representation of property boundaries and does not establish the true legal boundaries. See Plat Index for legend to map symbols.
 * - Indicates a subdivision not created by deed after May 14, 1959.
 Last revision to master: 2006 (DEC-06)



TOWN OF
WEST GREENWICH
 SCALE - 1" = 200'
PLAT 15

Plat No. 11

Plat No. 14

Plat

Plat No.

23

11

No.

Plat No. 16