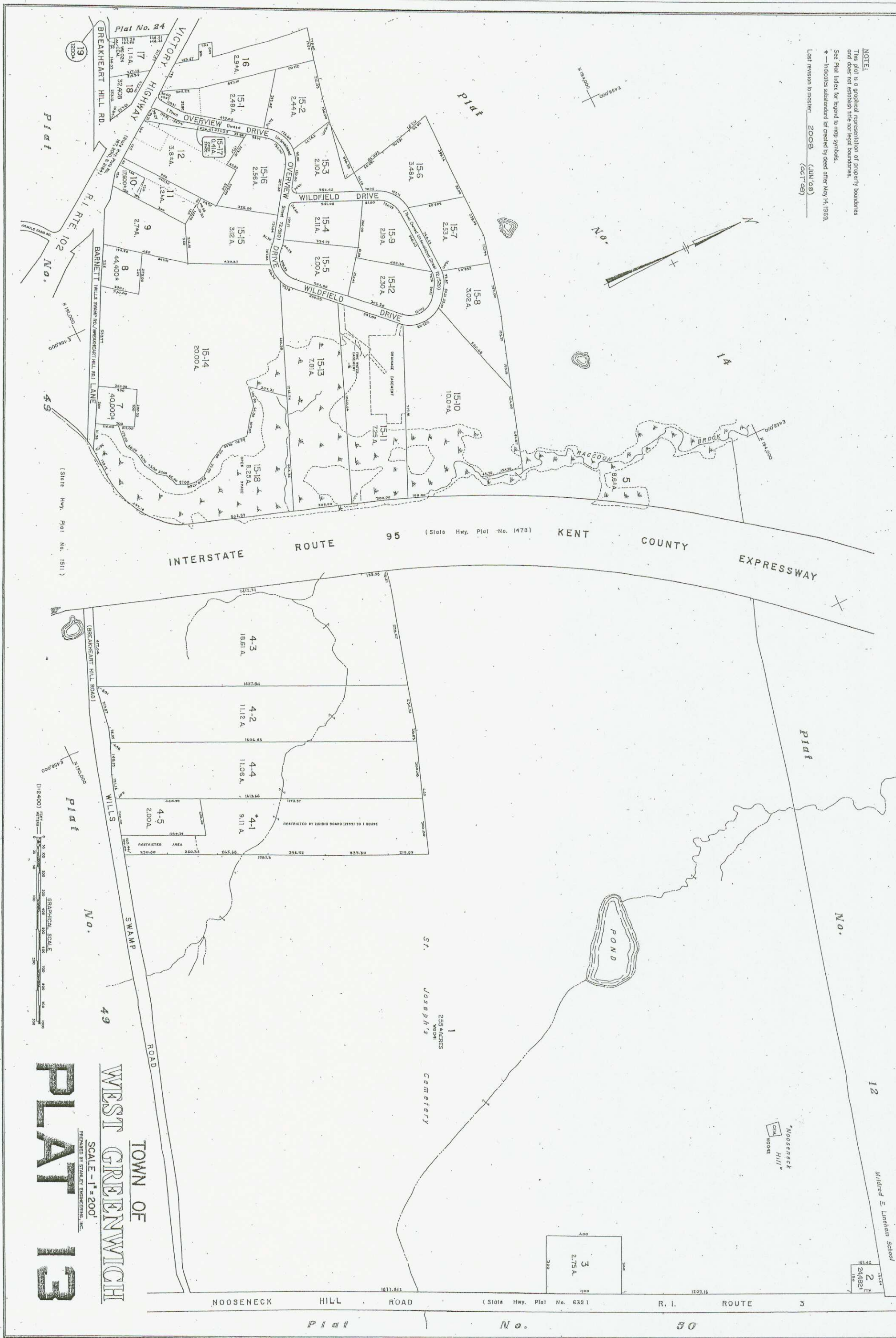
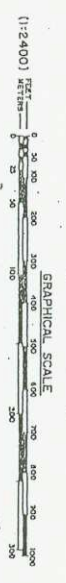


NOTE:  
 This plat is a graphical representation of property boundaries and does not establish title nor legal boundaries.  
 See Plat Index for legend to map symbols.  
 \*—Indicates subdivision created by deed after May 14, 1959.  
 Last revision to master 2008 (JUN '08)  
 (ACT '08)



TOWN OF  
 WEST GREENWICH  
 SCALE - 1" = 200'  
 PREPARED BY STANLEY ENGINEERING, INC.  
**PLAT 13**



Mildred E. Lineham School  
 244921  
 2  
 150'

3  
 275 A.