

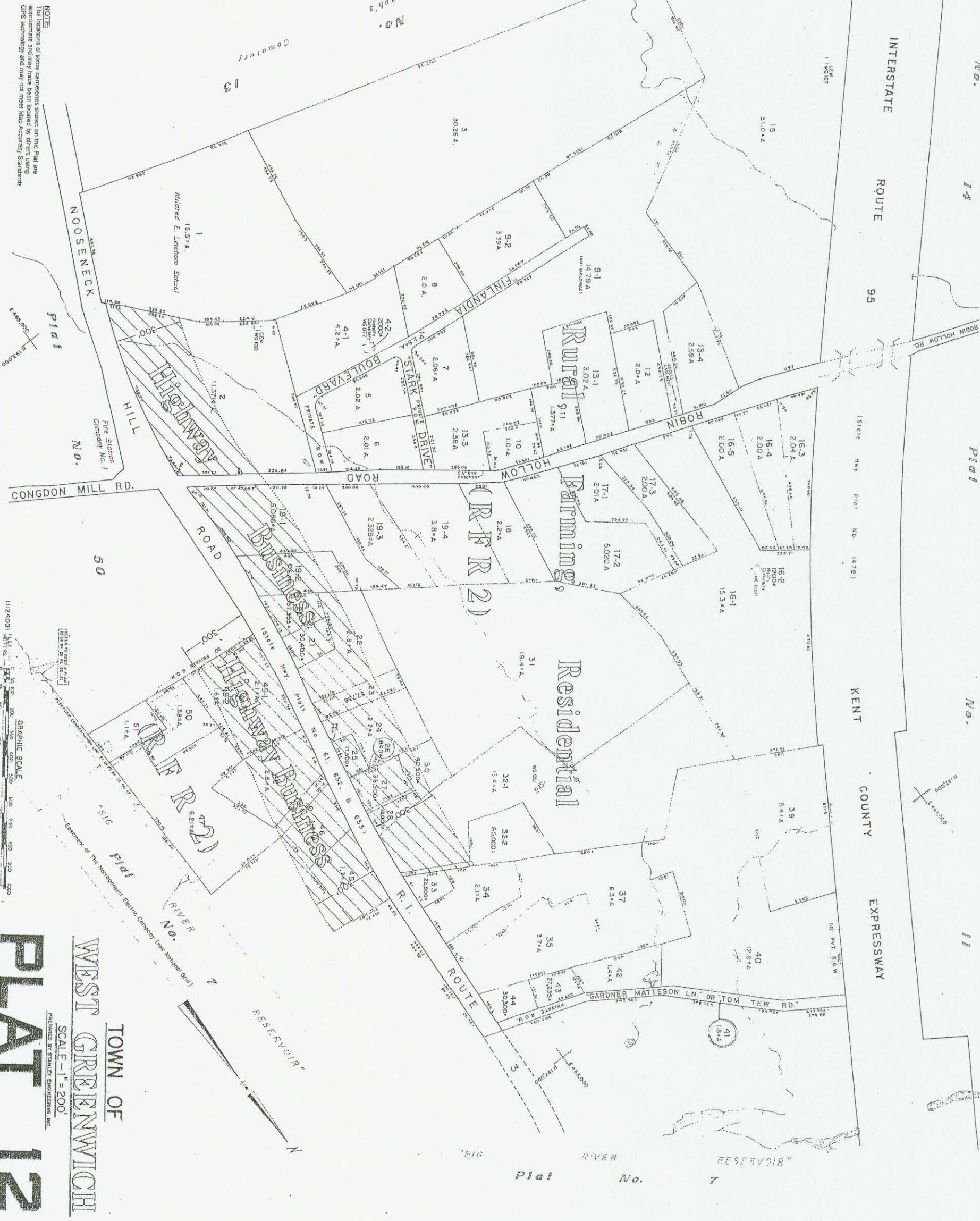
AMENDED: DEC. 15, 1994

Last revision to master: 2009 (Feb. 10.)

NOTE:
See Plat Index for legend to map symbols.

NOTE:
This plat is a graphical representation of property boundaries and does not establish title nor legal boundaries.

NOTE:
The locations of some cameras shown on this Plat are approximate and may have been located by others using GPS technology and may not meet Map Accuracy Standards.



TOWN OF
WEST GREENWICH
SCALE - 1" = 200'
PREPARED BY STANTLEY ENGINEERING, INC.

PLAT 12

ZONING.

