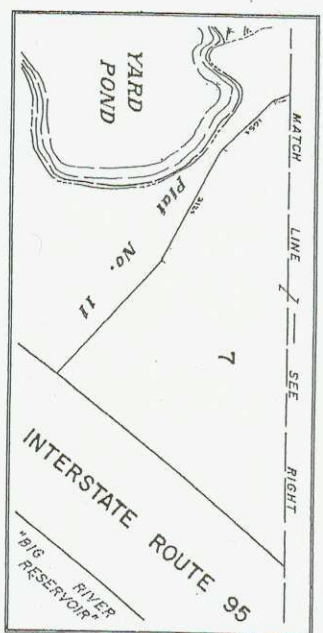


NOTE:
See Plat Index for legend to map symbols.
This plat is a graphical representation of property boundaries and does not establish title nor property boundaries.
*— Indicates a subdivision lot created after March 27, 1983.



Last revision to master: 2006 (APR 05)

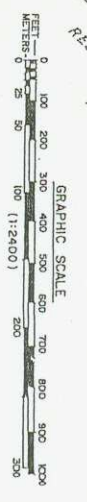
75.3 ACRES
(Area to line by deed)

Westerly line of Lot 5 & 6 by Plan 173 (NOT BY DEEDS)
Westerly line of Lot 7 by Plan 174 (NOT BY DEEDS)
Easterly line of Lot 7 by deed E21493

part of Lot 9 by Plan 173 (NOT BY DEEDS)
part of Lot 9 by Plan 173 (NOT BY DEEDS)

NOTE:
The locations of some cemeteries shown on this Plat are approximate and may have been located by others using GPS technology and may not meet Map Accuracy Standards.

PLAT 10
TOWN OF WEST GREENWICH
SCALE - 1" = 200'



PREPARED BY STANLEY ENGINEERING, INC.

NOOSENECK HILL ROAD
(State Hwy. Plat. No. 632 & 1099)

R.I. ROUTE 3

WEAVER HILL ROAD
(Old Nooseneck Hill Road)