

TOWN LINE REFERRED TO MAPS NO. 354, 217, & 218

APPROXIMATE TOWN LINE BASED PRIMARILY ON USGS MAPS

APPROXIMATE TOWN LINE BASED ON STATE AND FEDERAL RECORDS AND MAPS

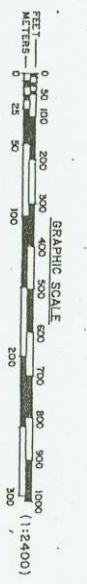
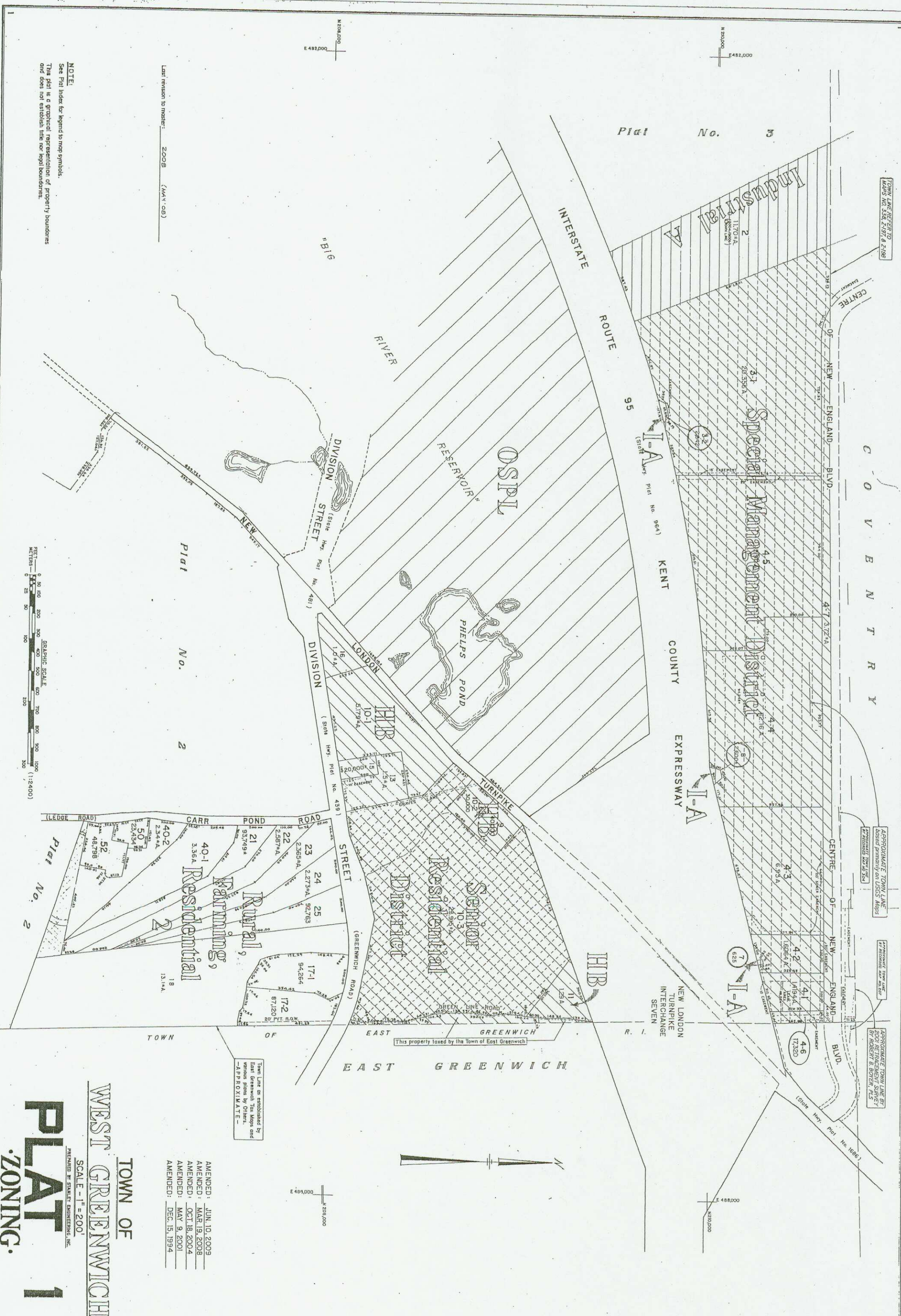
APPROXIMATE TOWN LINE ESTABLISHED BY ROBERT B. BOWEN, P.E.

Plat No. 3

Plat No. 2

Last revision to Master: 2008 (MAY 08)

NOTE:  
See Plat Index for legend to map symbols.  
This plat is a graphical representation of property boundaries and does not establish title nor legal boundaries.



- AMENDED: JUN. 10, 2009
- AMENDED: MAR. 19, 2008
- AMENDED: OCT. 18, 2004
- AMENDED: MAY 9, 2001
- AMENDED: DEC. 15, 1994

TOWN OF  
**WEST GREENWICH**

**PLAT 1**  
ZONING.

Town Line as established by East Greenwich Tax Maps and various plats by others.  
-APPROXIMATE-

This property taxed by the Town of East Greenwich